

MFC-J4620DW

brother
at your side



PRINT - SCAN - COPY - FAX

A PERFECT FIT FOR YOUR HOME
OR SMALL OFFICE BUSINESS



INTRODUCING

THE **MFC-J4620DW**

THE PERFECT FIT FOR YOUR BUSINESS

Change how you look at office printing. The MFC-J4620DW is a robust inkjet printer designed specifically to enhance productivity in your business. Features such as automatic 2-sided print, seamless connectivity to mobile devices with NFC technology and A3 printing capability are all packed into its compact size, raising productivity without losing valuable office space.

Welcome to a new age of printing.



ENHANCED CONNECTIVITY

With built-in wireless and wired LAN, the cloud connected MFC-J4620DW ensures seamless collaboration between team members. Scan to and print directly from cloud services such as Dropbox, Evernote™, OneDrive and Google Drive to digitise paper-based content to share among your team in seconds.



MOBILE INTEGRATION

Businesses need to stay agile in order to compete well. With built-in support for mobile print and scan solutions, your team can print and scan anywhere, anytime. Brother's mobile print and scan app provides seamless compatibility with Apple, Android and Windows devices, meaning faster printing to stay ahead of the competition.



COST EFFECTIVE

High yield ink cartridges capable of up to 1,200 black and colour prints, combined with other cost-saving features like 2-sided printing and ink save mode help to lower operating costs.



PROFESSIONAL

Ensure that your business is noticed by using the rear feed slot to print documents in A3 size. With resolutions of up to 6,000 x 1,200dpi, your prints will always look professional.



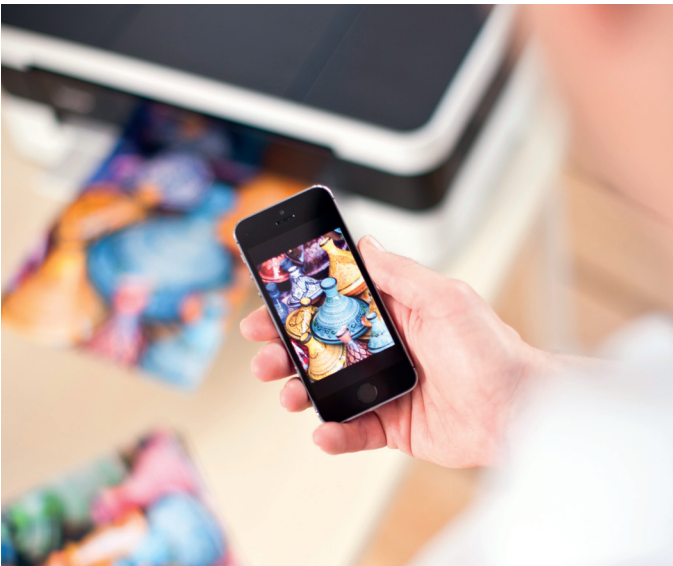
PRODUCTIVE

The MFC-J4620DW comes packed with a range of productivity solutions to help streamline your business. Fast print and scan speeds, paired with the 20 sheet automatic document feeder help to quickly capture and share vital information.



Key facts

- 22ipm mono and 20ipm colour print speeds*
- Up to 1,200 page black and colour XL ink cartridges
- Automatic 2-sided A4 print plus scan/copy/fax at up to A4 paper sizes
- Print & scan from your smartphone or tablet
- Wi-Fi & Ethernet network plus NFC
- 9.3cm touchscreen colour LCD
- 20 sheet automatic document feeder for quick scanning/copying/faxing
- Rear feed slot for A3 paper size
- 150 sheet A4 paper tray



*ISO/IEC 24734

MFC-J4620DW Technical Specifications

The MFC-J4620DW is packed full of features and is one of the most compact All-In-One inkjet printers capable of printing up to A3 size by using its rear manual feed .

Printing in A4 at speeds of up to 22ipm (mono) and 20ipm (colour), it allows you to present professional quality documents without the wait, while high yield ink cartridges that can print up to 1,200 pages ensure low cost printing without sacrificing on quality.

Use the built-in NFC reader to quickly connect your smartphone or tablet to the MFC-J4620DW and print from/scan to your mobile device through Brother's iPrint&Scan app. Connect wirelessly over your network to scan and print documents from your desktop PC.

You can also connect directly to the web from your printer to scan to; or print from Dropbox, Google Drive, Box, OneDrive, Picasa™, Flickr®, Evernote™, and OneNote, while Apple Airprint and Google Cloud Print compatibility, offers true flexibility in any workplace.

All Brother inkjet multifunction printers incorporate an ink system with four individual ink cartridges – meaning you only need to replace the ink that runs out – reducing waste and saving you money. The MFC-J4620DW is also compliant with strict ENERGY STAR, Blue Angel and Nordic Swan environmental standards to ensure low energy consumption, low noise levels and a recycle-friendly design.

GENERAL

Memory capacity	128MB
Connectivity	USB 2.0, Wireless 802.11b/g/n, Ethernet 10/100BASE-TX
Mobile connectivity	iPrint&Scan app, Airprint, Google Cloud Print™, Wi-Fi Direct, NFC
Display	9.3 cm LCD touchscreen display

COLOUR PRINTER

Speed (laser comparable)*	Up to 22ipm mono & 20ipm colour
2-sided print	Automatic up to A4
Resolution	Up to 6,000 x 1,200 (vertical x horizontal)
Borderless printing	Available for A3, A4, LTR, A6, Photo 10x15cm, Photo-L, Photo 2-L, Index Card, Postcard
Minimum droplet size	* 1.5pl (when used with Brother BP71 paper, see Supplies section)

COLOUR FAX

Modem	14.4kbps
Speed dials	100 locations for pre-stored numbers
Page memory	Up to 200 pages (ITU-T Test chart No 1)
Error correction mode	Yes
Other functions	Fax forwarding, Remote access, Fax retrieval, Dual access, I-Fax**, PC-fax send, PC-fax receive***, Auto reduction, Group dials

COLOUR COPIER

Speed	Up to 12ipm mono & 9ipm colour
Resolution	1,200 x 2,400dpi (colour & mono)
Multi copy	Yes (99 copies)
Enlargement / reduction ratio	25% - 400%
Other features	N-in-1, Poster printing

COLOUR SCANNER

Resolution	Optical: Up to 2,400dpi Interpolated: Up to 19,200dpi
Scan speed	From 3.37 seconds mono & colour at 100dpi
Scan format	JPEG, BMP, PDF, TIFF, PNG (USB flash memory drive supports PDF mono & colour, JPEG, TIFF).
Scan to	Email, OCR, Image /Card, File, USB Flash Drive, FTP, Network***, E-mail server**

PAPER HANDLING

Paper input	150 sheet standard paper tray 20 sheet automatic document feeder (ADF) 1 sheet manual feed slot up to A3
Paper output	50 sheets
Paper handling sizes	Landscape: A4, LTR, EXE. Portrait: A3, LGR, LGL, A5, A6, Photo, Indexcard, Photo-L, Photo-2L, Com-10, DL Envelope, Monarch
Media types	Plain, Inkjet, Glossy, Transparency

* ISO/IEC 24734

**Optional free download available from <http://support.brother.com>

***Windows® only

****Approx. cartridge yield is declared in accordance with ISO/IEC 24711

DIRECT PRINT AND SCANNING

USB Media cards	PictBridge, USB flash memory drive Memory Stick Duo/Pro Duo/Micro, Secure Digital (SD), Secure Digital High Capacity (SDHC), Secure Digital Extended Capacity (SDXC), Multimedia Card, Multimedia Card Plus, Multimedia Card Mobile
Direct print format	JPEG
Direct scanning format	JPEG, PDF (colour), TIFF, PDF (mono)

SOFTWARE

Driver software included	Brother MFL-Pro Suite
Software - Windows®	Brother ControlCentre4, Nuance® Paperport® 12 SE with OCR,
Software - Macintosh®	Brother ControlCentre2, NewSoft® Prestol® PageManager9
Supported operating systems	Windows® 8 Windows® 7 Windows Vista® Windows® XP Windows Server® 2003 & 2003 R2 Windows Server® 2008 & 2008 R2 Windows Server® 2012 & 2012 R2 Mac OS X v10.7.5/10.8.x/ 10.9.x

SUPPLIES

Standard cartridges	LC223 BK/C/M/Y black and colour - approx. 550**** A4 pages
High yield cartridges	LC225 XL C/M/Y colour - approx. 1,200**** A4 pages LC227 XL BK black - approx. 1,200**** A4 pages
Brother paper	BP71GA3: A3 glossy photo paper, 20 sheets BP71GLA: A4 glossy photo paper, 20 sheets BP71GLP: 4x6" glossy photo paper, 20 / 50 sheets BP60MA: A4 matte inkjet paper, 25 sheets BP60PA: A4 inkjet paper, 250 sheets



WEIGHTS & DIMENSIONS

With carton	W569 x D265 H398mm 11.9kg
Without carton	W480 x D290 x H188mm 9.5kg

OTHERS

Power consumption	Operating: Approx. 32W Ready: Approx. 5.5W Sleep: Approx. 1.9W Off: Approx 0.04W
Sound pressure level (operating)	50dBA (Average)



brother
at your side

Brother UK Ltd

Shepley Street, Audenshaw, Manchester M34 5JD

Tel: +44 (0)333-770 4444 Fax: +44 (0)161-931 2218

Website: www.brother.co.uk

All specifications correct at time of printing. Brother is a registered trademark of Brother Industries Ltd. Brand product names are registered trademarks or trademarks of their respective companies.

Contact: